



Weekly Report for: Jun 21, 2010

Daily Average Volume	35,267,440
Daily Average Volume Routed & Executed	56,623,810
Daily Average Value	\$683,510,433
Daily Average Trades	181,660
Daily Average Symbols	567

Hidden Volume Stats

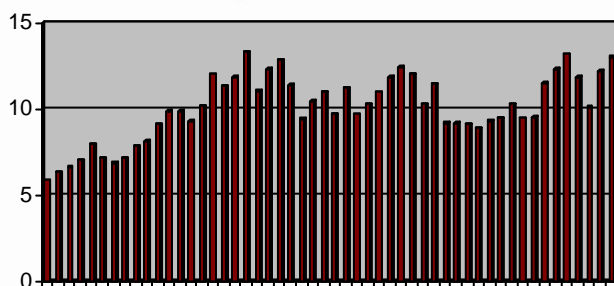
% Chi-X Hidden Volume	8.48%	Weekly Volume	14,957,100
Average Order Size	8,485	Weekly Value	\$317,972,328

ETF Highlights

Daily Average Value	\$77,571,105
Daily Average Volume	7,378,020
Daily Average Trades	13,343

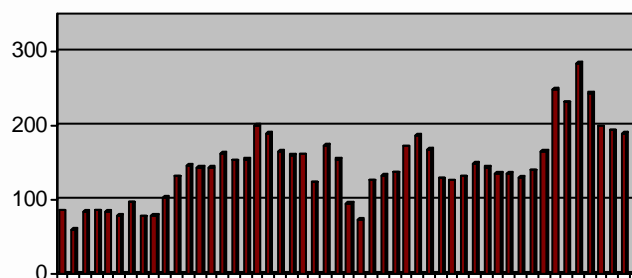
Symbol	Chi-X Vol	% Chi-X Market Share
HNU	8,364,200	10.01%
HND	7,137,600	11.02%
XIU	5,156,300	6.18%

Weekly Avg % S&P TSX 60



6/15/09 - 6/25/10

Weekly Avg Daily Trades (000's)



6/15/09 - 6/25/10

Rank By % S&P Composite

Symbol	Chi-X Vol	% Market	Market Vol
ARZ	624,200	24.24%	2,574,830
CCO	1,103,700	22.02%	5,011,958
BAM.A	915,700	21.77%	4,206,292
RBA	71,000	21.64%	328,147
ERF.UN	282,500	19.94%	1,417,091
PWT.UN	1,063,300	19.92%	5,339,000
IMO	720,700	19.63%	3,671,733
GSC	2,004,800	19.27%	10,401,863
TRI	1,437,700	19.12%	7,518,806
THI	384,400	18.83%	2,041,463
PAA	184,600	18.77%	983,455
ECA	2,888,100	18.51%	15,601,298
SVM	556,500	18.45%	3,016,871

Rank By Volume S&P Composite

Symbol	Chi-X Vol	% Market	Market Vol
TLM	4,712,800	17.98%	26,205,734
SU	4,436,500	13.64%	32,530,457
YRI	4,005,100	16.47%	24,320,263
MFC	3,909,400	11.63%	33,618,664
ABX	3,470,500	13.65%	25,416,359
TCK.B	3,420,100	12.32%	27,754,720
EQN	3,311,000	13.75%	24,085,187
BVF	3,266,200	16.34%	19,987,979
BBD.B	2,982,000	6.28%	47,469,411
ECA	2,888,100	18.51%	15,601,298
RIM	2,694,500	15.01%	17,954,242
NGD	2,444,100	10.98%	22,254,257
UUU	2,349,400	5.17%	45,453,109