



Weekly Report for: June 7, 2010

Daily Average Volume	39,243,540
Daily Average Volume Routed & Executed	58,570,968
Daily Average Value	\$749,465,459
Daily Average Trades	193,839
Daily Average Symbols	646

Hidden Volume Stats

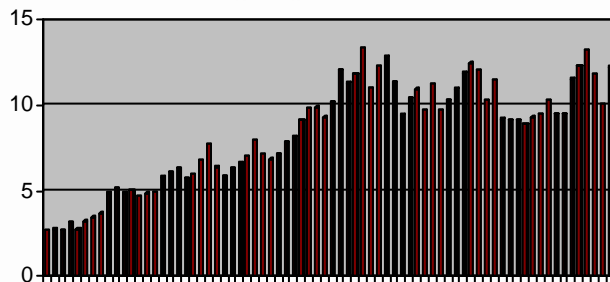
% Chi-X Hidden Volume	7.58%	Weekly Volume	14,876,000
Average Order Size	10,131	Weekly Value	\$294,564,370

ETF Highlights

Daily Average Value	\$76,871,237
Daily Average Volume	7,162,660
Daily Average Trades	14,175

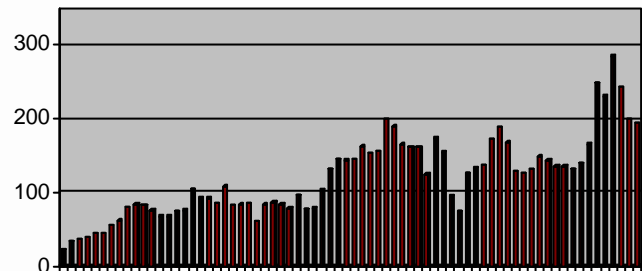
Symbol	Chi-X Vol	% Chi-X Market Share
HNU	8,334,900	10.31%
HND	5,960,900	10.42%
XIU	4,945,300	5.87%

Weekly Avg % S&P TSX 60



1/5/09 - 6/11/10

Weekly Avg Daily Trades (000's)



1/5/09 - 6/11/10

Rank By % S&P Composite

Symbol	Chi-X Vol	% Market	Market Vol
PWT.UN	1,452,800	24.30%	5,979,149
THI	437,500	20.71%	2,112,788
RBA	69,200	20.00%	345,963
MG.A	374,300	19.96%	1,875,665
CCO	1,378,000	19.64%	7,016,805
ERF.UN	410,000	18.87%	2,172,373
BPO	1,539,300	18.79%	8,190,762
ARZ	420,900	18.50%	2,274,763
BVF	444,100	18.43%	2,409,395
TRI	1,106,600	18.22%	6,072,539
RIM	2,205,700	17.95%	12,285,297
GNA	3,803,900	17.86%	21,296,798
TRP	1,296,800	17.76%	7,300,117

Rank By Volume S&P Composite

Symbol	Chi-X Vol	% Market	Market Vol
SU	6,752,300	14.44%	46,752,878
YRI	5,477,900	14.56%	37,634,287
UUU	5,054,700	6.05%	83,507,314
LUN	4,623,300	7.00%	66,084,058
BBD.B	4,171,000	8.30%	50,225,715
TLM	3,942,400	12.42%	31,743,848
GNA	3,803,900	17.86%	21,296,798
ABX	3,645,900	13.29%	27,424,405
TCK.B	3,637,900	11.14%	32,657,247
MFC	3,584,700	8.57%	41,804,705
G	3,243,700	16.52%	19,631,035
RY	2,982,700	10.37%	28,761,925
WTN	2,834,900	5.65%	50,137,033